

### Connecting Elements for PowerCube

Standard elements and adapters for the accurately repeatable connections of PowerCube modules



#### Function description

The dimensions of the connecting elements are matched to the cube shape of the PowerCube modules. The accurately repeatable connection is made easily and quickly by means of four hexagon socket screws.

#### Your advantages and benefits

**Standard elements**  
for high availability

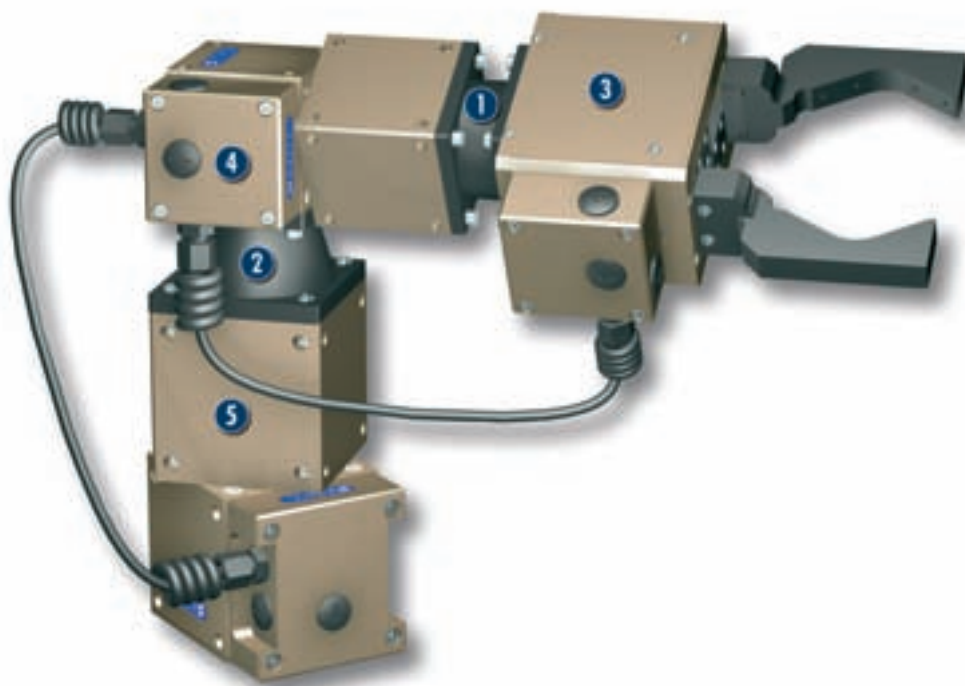
**Geometry designs „straight“, „conical“ and „angular“**  
for maximum combinations

**Suitable for all grippers, rotary units, drives and linear modules of the PowerCube series**

### Application example

### Area of application

For easy and accurately repeatable connection of all PowerCube modules



- 1 Connecting element - straight  
PAM 100
- 2 Connecting element - conical  
PAM 110
- 3 Servo-electric 2-Finger Parallel  
Gripper PG 70

- 4 Servo-electric Rotary Actuator  
PR 70
- 5 Servo-electric Rotary Actuator  
PR 90

### General information

**Warranty**  
24 months

**Material**  
Aluminum alloy, hard-anodized

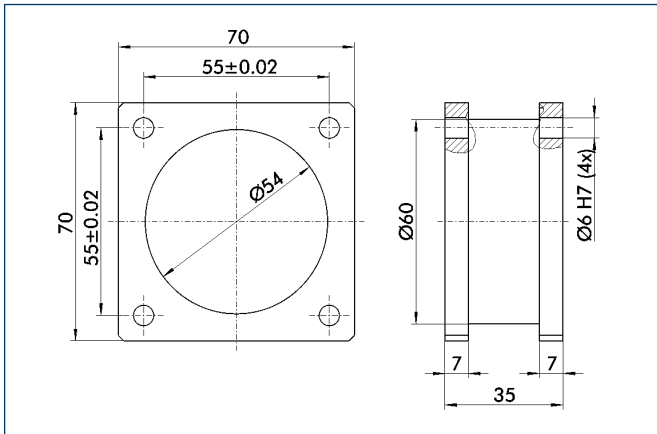
### Notes

Special lengths are available on request.

# PAM - Straight

Accessories · Mounting Elements · For Standard Screw Connection Diagram

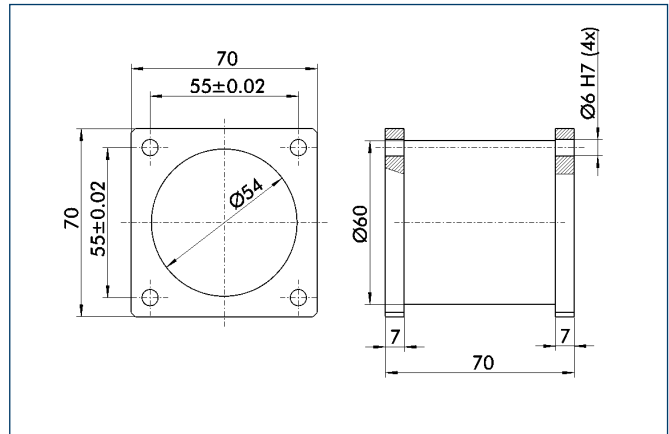
## PAM 100 – Straight



suitable for PowerCube-Modules of size 70

Description	ID
PAM 100	0307800

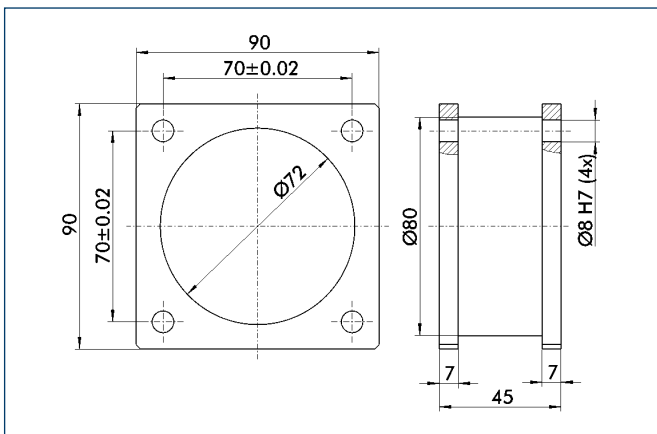
## PAM 101 – Straight



suitable for PowerCube-Modules of size 70

Description	ID
PAM 101	0307801

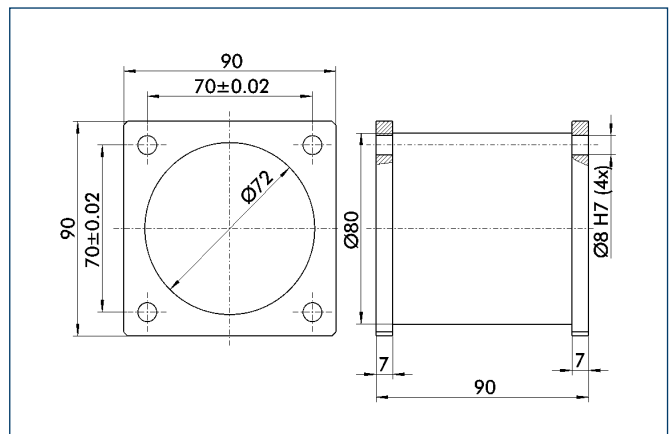
## PAM 102 – Straight



suitable for PowerCube-Modules of size 90

Description	ID
PAM 102	0307802

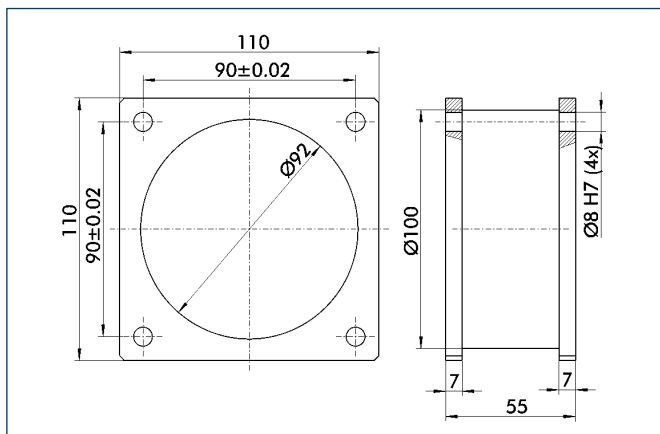
## PAM 103 – Straight



suitable for PowerCube-Modules of size 90

Description	ID
PAM 103	0307803

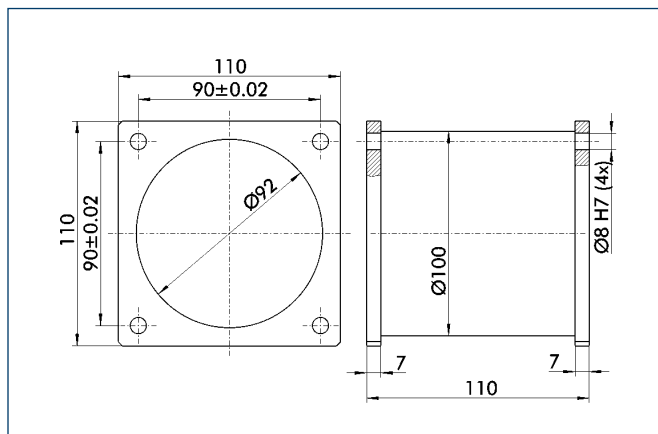
### PAM 104 – Straight



suitable for PowerCube-Modules of size 110

Description	ID
PAM 104	0307804

### PAM 105 – Straight



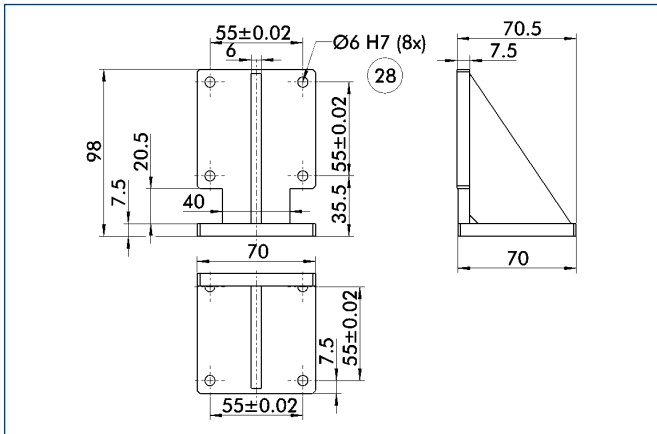
suitable for PowerCube-Modules of size 110

Description	ID
PAM 105	0307805

# PAM - Angled

Accessories · Mounting Elements · For Standard Screw Connection Diagram

## PAM 120 - Angled

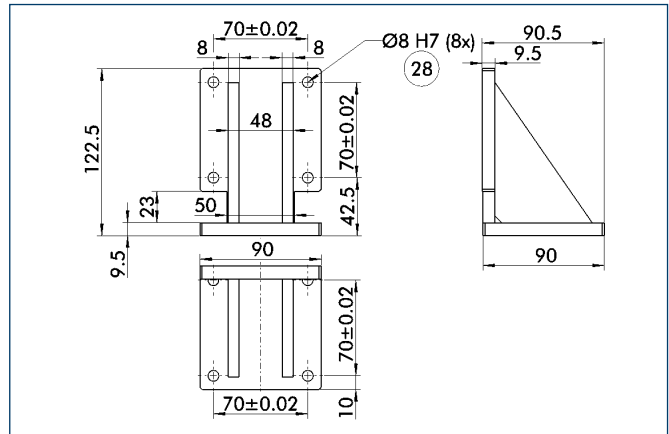


⊘ Through-bore

suitable for PowerCube-Modules of size 70

Description	ID
PAM 120	0307820

## PAM 121 - Angled

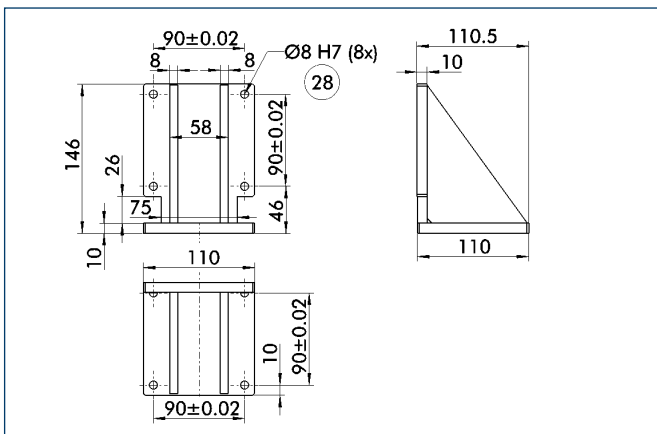


⊘ Through-bore

suitable for PowerCube-Modules of size 90

Description	ID
PAM 121	0307821

## PAM 122 - Angled

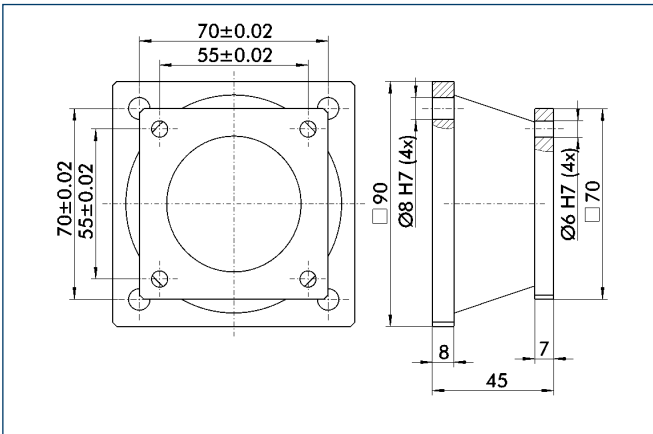


⊘ Through-bore

suitable for PowerCube-Modules of size 110

Description	ID
PAM 122	0307822

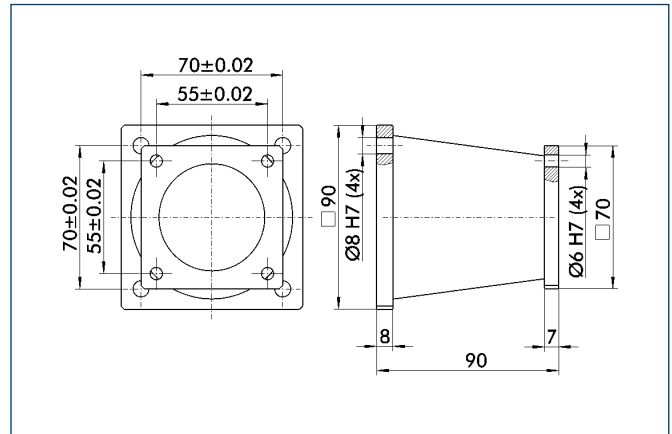
### PAM 110 - Conical



suitable for PowerCube-Modules of size 70/90

Description	ID
PAM 110	0307810

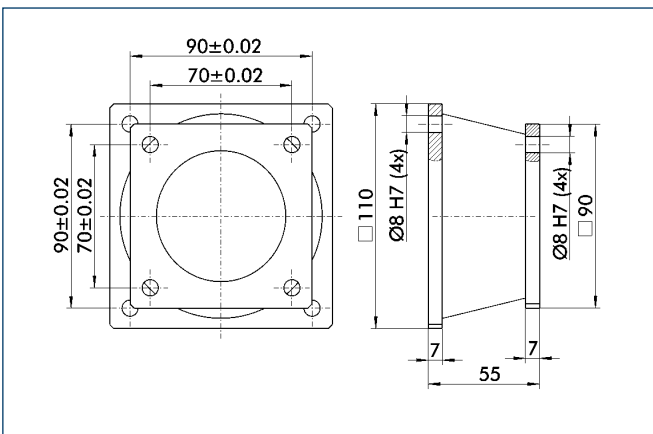
### PAM 111 - Conical



suitable for PowerCube-Modules of size 70/90

Description	ID
PAM 111	0307811

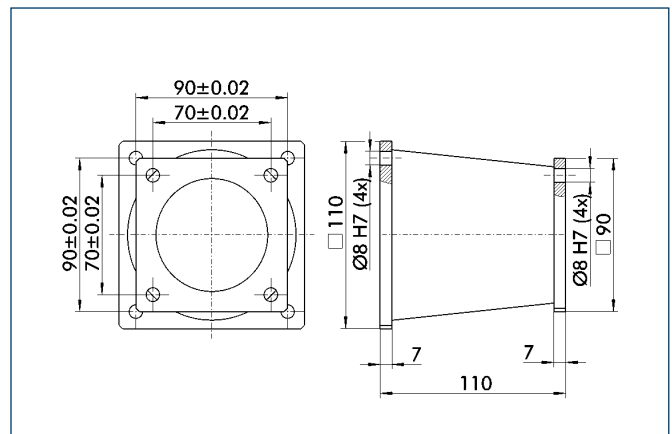
### PAM 112 - Conical



suitable for PowerCube-Modules of size 90/10

Description	ID
PAM 112	0307812

### PAM 113 - Conical



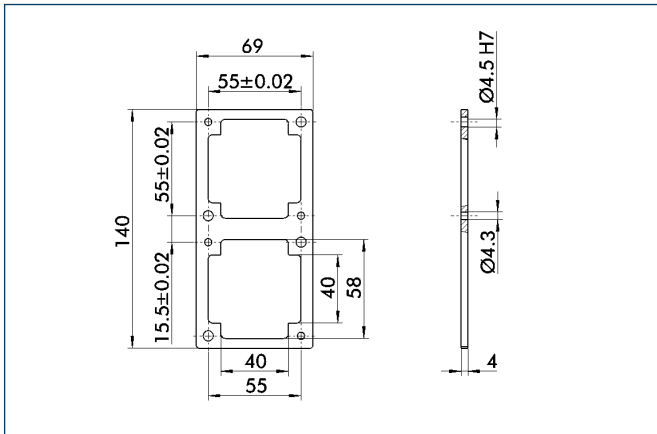
suitable for PowerCube-Modules of size 90/10

Description	ID
PAM 113	0307813

# PAM - Adapter plates

Accessories · Mounting Elements · For Standard Screw Connection Diagram

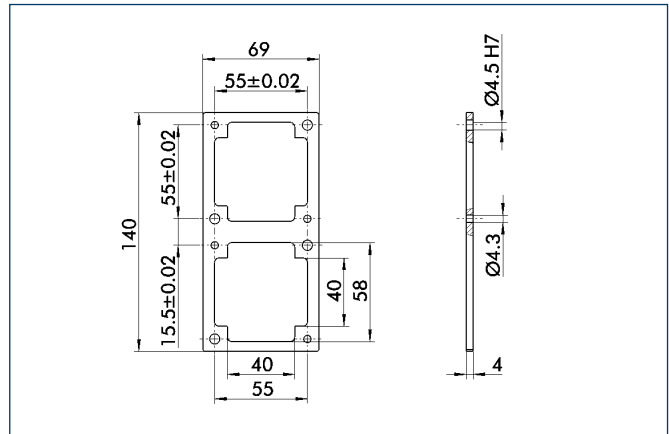
## PAM 164



suitable for PowerCube-Modules of size 70

Description	ID
PAM 164	0307864

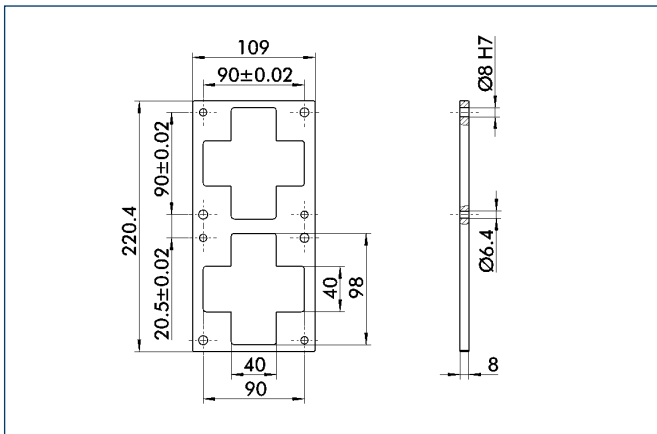
## PAM 165



suitable for PowerCube-Modules of size 90

Description	ID
PAM 165	0307865

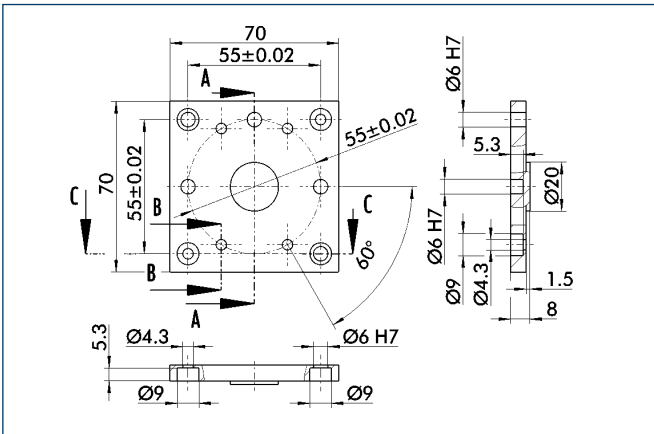
## PAM 166



suitable for PowerCube-Modules of size 110

Description	ID
PAM 166	0307866

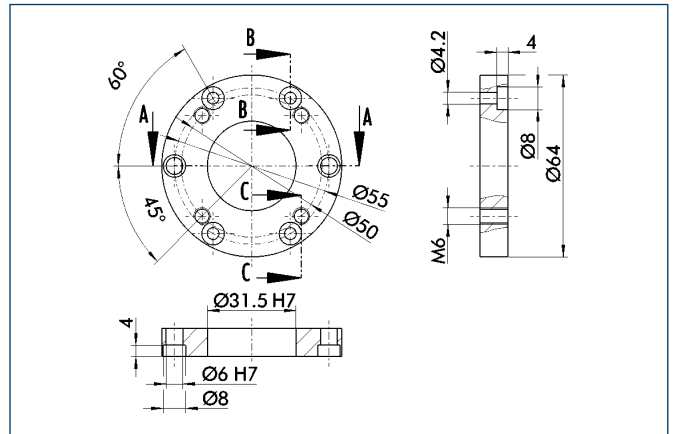
## PAM 147 – PG to PW



suitable for accurately repeatable connection of the 2-finger parallel gripper PG 70 with the rotary pan-tilt actuator PW 70

Description	ID
PAM 147	0307847

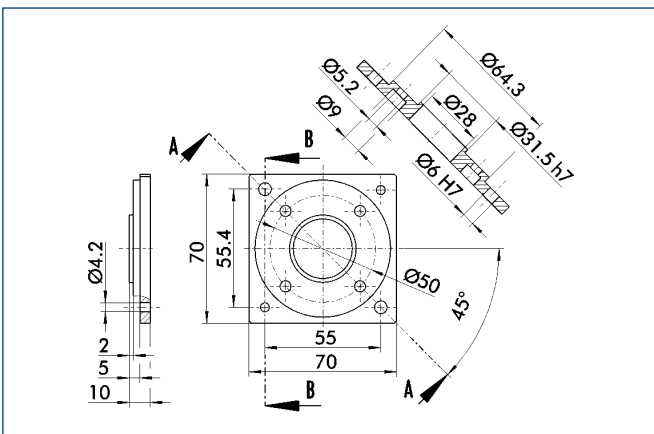
## PAM 160 – PW to FTCL



suitable for accurately repeatable connection of the rotary pan-tilt actuator PW 70 with the force sensor FTCL-050

Description	ID
PAM 160	0307860

## PAM 161 – FTCL to PG



suitable for accurately repeatable connection of the force sensor FTCL-050 with the 2-finger parallel gripper PG 70

Description	ID
PAM 161	0307861